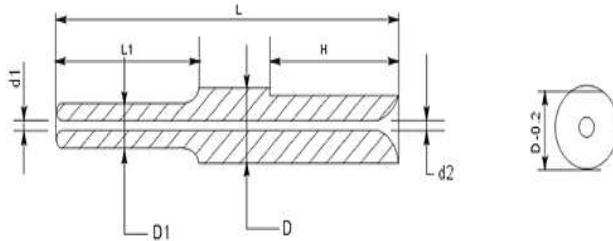




PRODUCT CATALOGUE

Nozzles Specification



Sl.no	Series	Part no	L	L1	D	D1	d1	d2	H
1	TH3-001	W0435-2-1010	30	7	3	1	0.3	0.3	N/A
2	TH3-002	W0530-3-1010	30	10	3	1	0.5	0.5	N/A
3	TH3-003	W0630-3-1007	30	7	3	1	0.6	0.6	N/A
4	TH3-004	W0330-3-0807	30	7	3	0.8	0.3	0.3	N/A
5	TH3-005	W0630-3-1211	30	11	3	1.2	0.6	0.6	N/A
6	TH3-006	W0630-3-1309	30	9	3	1.3	0.6	0.6	N/A
7	TH3-007	W0630-3-1511	30	11	3	1.5	0.6	0.6	N/A
8	TH3-008	W1030-3	30	N/A	3	N/A	1	1	N/A
9	TH3-009	W0330-3-081	30	10	3	0.8	0.3	0.3	N/A
10	TH3-010	W0330-3-060	30	7	3	0.6	0.3	0.3	N/A
11	TH3-011	W1030-3-2014	30	14	3	2	1	1	N/A
12	TH3-012	W1230-3-2514	30	14	3	2.5	1.2	1.2	N/A
13	TH3-013	W0330-3-0707	30	7	3	0.7	0.3	0.3	N/A
14	TH3-014	W0330-3-0502	30	2	3	0.5	0.3	0.3	N/A
15	TH3-015	W0530-3-1210	30	10	3	1.2	0.5	0.5	N/A
16	TH3-016	W0330-3-0504	30	4	3	0.5	0.3	0.3	N/A
17	TH3-017	W0430-3-0808	30	8	3	0.8	0.4	0.4	N/A
18	TH3-018	W0630-3-1212	30	12	3	1.2	0.6	0.6	N/A



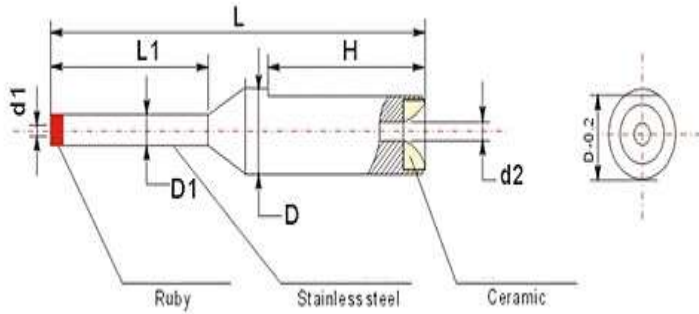
Optima Tech Solutions

(Complete Winding Solutions)

optimatech@gmail.com

Mob.no: 9632243111

Ruby Nozzles Specification



No.	Item	Name	Specification (MM)						
			L	L1	D	D1	d1	d2	H
1	R2-001	RC0326-2-1006	26	6	2	1	0.3	0.6	N/A
2	R2-002	RC0326-2-0806	26	6	2	0.8	0.3	0.6	N/A
3	R2-003	RC0330-2-0807	30	7	2	0.8	0.3	0.4	N/A
4	R2-004	RC0335-2-0810	35	10	2	0.8	0.3	0.4	N/A
5	R2-005	RC0535-2-1008	35	8	2	1	0.5	0.5	N/A
6	R2-006	RC0535-2.5-1411	35	11	2.5	1.4	0.5	0.8	N/A
7	R2-007	RC0336-2.5-1011	36	11	2.5	1	0.3	0.6	N/A
8	R2-008	RR0635-2-1610	35	10	2	1.6	0.6	0.8	N/A
9	R2-009	RS0535-2.5-1210	35	10	2.5	1.2	0.5	0.8	N/A
10	R2-010	RC0530-2-1208	30	8	2	1.2	0.5	0.6	N/A
11	R2-011	RS0830-2	30	N/A	2	2	0.8	0.8	N/A
12	R3-001	RC0330-3-1007	30	7	3	1	0.3	0.8	N/A
13	R3-002	RC0330-3-0807	30	7	3	0.8	0.3	0.6	N/A
14	R3-003	RC0430-3-1210	30	10	3	1.2	0.4	0.6	N/A
15	R3-004	RC0530-3-1311	30	11	3	1.3	0.5	0.8	N/A
16	R3-005	RC0630-3-1511	30	11	3	1.5	0.6	0.8	N/A
17	R3-006	RC0323-3-1007P	23	7	3	1	0.3	0.8	16
18	R3-007	RC0511-3-1506P	11	6	3	1.5	0.5	0.6	5
19	R3-008	RC0514-3-1509P	14	9	3	1.5	0.5	0.6	5
20	R3-009	RC0311-3-1006P	11	6	3	1	0.3	0.6	5
21	R3-010	RC0314-3-1009P	14	9	3	1	0.3	0.6	5
22	R3-011	RC0530-3-1455	14	9	3	1.5	1	1	N/A
23	R3-012	RC0530-3-1465	30	6.5	3	1.4	0.5	0.6	N/A
24	R3-013	RC0330-3-1535P	30	3.5	3	1.5	0.3	0.5	13
25	R3-014	RC0330-3-1012	30	12	3	1	0.3	0.6	N/A
26	R3-015	RS0821-3-2015P	21	15	3	2	0.8	1	6
27	R3-016	RC0615-3-1505	15	5	3	1.5	0.6	0.6	N/A
28	R3-017	RC0530-3-2014	30	14	3	2	0.5	0.5	N/A
29	R3-018	RC0426-3-1208	26	8	3	1.2	0.4	0.6	N/A
30	R3-019	RC0317-3-0812	17	12	3	0.8	0.3	0.4	N/A
31	R3-020	RC0414-3-1309	14	9	3	1.3	0.4	0.6	N/A
32	R3-021	RC0314-3-1015	14	1.5	3	1	0.3	0.6	N/A
33	R3-022	RR0314-3-1003	14	3	3	1	0.3	0.5	N/A
34	R3-023	RC03186-3-0805	18.6	5	3	0.8	0.3	0.4	N/A
35	R3-024	RC0334-3-1035P	34	3.5	3	1	0.3	0.6	8



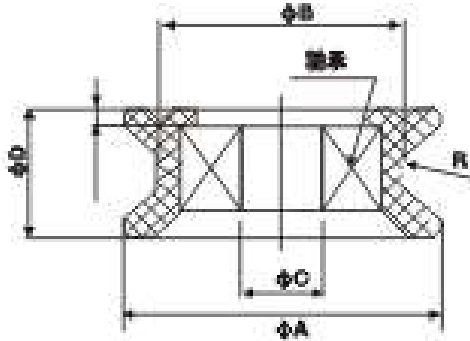
Optima Tech Solutions

(Complete Winding Solutions)

optimatech@gmail.com

Mob.no: 9632243111

Ceramic Rollers



SL NO	Model No	A (mm)	B (mm)	C (mm)	D (mm)	Model No	A (mm)	B (mm)	C (mm)	D/H (mm)
1	OPHT101	7.8	6	2	3.2	OPNT001-2/OPNT004-2	10.0	8.0	2.0	4.0
2	OPHT102	8	8	2	4	OPNT002-2	11.5	10.0	4.0	4.0
3	OPHT103	10.6	7.3	2	3.5	OPNT003-2	14.0	10.0	3.0	6.0
4	OPHT104	12	10	4	4	OPNT005-2	7.8	6.0	2.0	3.2
5	OPHT105	14	10	3	6	OPNT006-2	10.6	7.3	2.0	3.5
6	OPHT105-C04	21.5	14	4	10	OPNT007-2	27.0	15.0	5.0	11.0
7	OPHT105-C05	21.5	14	5	10	OPNT008-2	16.5	13.0	4.0	5.0
8	OPHT106-C05	30	24	5	11	OPNT009-2	20.0	14.0	4.0	10.0
9	OPHT106-C06	30	24	6	11	OPNT0011-2	7.5	6.0	2.0	2.5
10	OPHT106-C07	30	24	7	11					
11	OPHT106-C08	30	24	8	11					
12	OPHT107-C05	35	24	5	11					
13	OPHT107-C06	35	24	6	11					
14	OPHT107-C07	35	24	7	11					
15	OPHT107-C08	35	24	8	11					
16	OPHT108-C05	40	24	5	12					
17	OPHT108-C06	40	24	6	12					
18	OPHT108-C07	40	24	7	12					
19	OPHT108-C08	40	24	8	12					
20	OPHT109-C09	45	36	9	13.5					
21	OPHT109-C10	45	36	10	13.5					



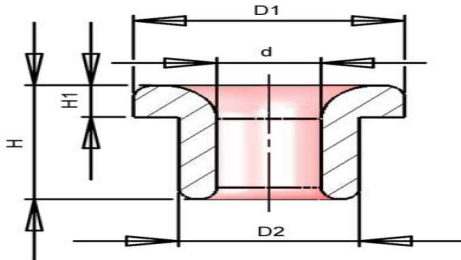
Optima Tech Solutions

(Complete Winding Solutions)

optimatech@gmail.com

Mob.no: 9632243111

Ceramic Beads



Model	Specification (Tolerance±0.05mm)				
	D1	D2	d	H	H1
CY-001	4.5	2.8	1	3	1
CY-002	5	3.5	2.4	3.6	1
CY-003	6.8	4.7	2.6	3.3	1.3
CY-004	10	7.2	4.8	8.8	1.7
CY-005	10	7	4.8	8.8	1.7
CY-006	11	8	3.7	9.2	3
CY-007	7.8	5.2	3	5.5	1.5
CY-008	9.2	7	4.5	8	2
CY-009	6	4.2	2.6	3.2	1.2
CY-010	10.2	6.2	4.2	10	2
CY-011	9.7	7	4	9	2
CY-012	6	3.8	2	3.6	1
CY-013	7	3.8	2	4	1.5
CY-014	7.7	6	3.4	6	2
CY-015	6	4.5	2	5	1.5
CY-016	12	10	7	8.3	2
CY-017	12	9	5.5	8.5	1.5
CY-018	5.5	4	1.8	4.3	1.3
CY-019	6	4.4	2	5	1.5
CY-020	6.2	3.7	1.7	5	1
CY-021	13	9	4.3	7	2
CY-22	10	6.8	4.2	10	2
CY-023	14	10	6.5	9.8	3
CY-024	15.3	11.8	7.5	10	3
CY-025	12	10	7.1	6	2
CY-026	6.5	4.9	3.3	6.5	1.5
CY-027	7.8	6	3.4	4.8	1.8
CY-028	4.2	3	2	5	1
CY-029	4.2	3	1	4	1
CY-030	5.9	4	2	8	1.2
CY-031	7.8	6	3.5	8	1.6
CY-032	17.7	12.8	7	18.7	3
CY-033	14	10.4	6.6	18	2.5
CY-034	11.7	9.5	5.5	8.2	2.4
CY-035	12	9.6	6.2	10.5	2.1
CY-090	8	5.4	2.5	5.5	1.5



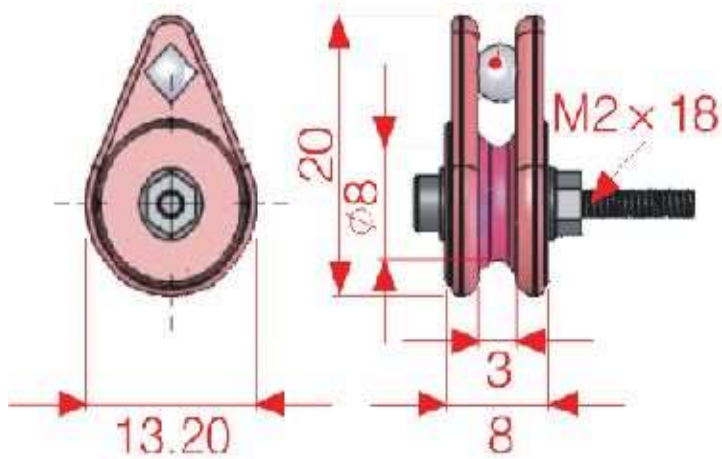
Optima Tech Solutions

(Complete Winding Solutions)

optimatech@gmail.com

Mob.no: 9632243111

Wire Retainer



NT004(4.0g)



Sl.no	Part No
1	WR001
2	Wr002
3	Wr003
4	Wr004
5	Wr005
6	Wr006



Optima Tech Solutions

(Complete Winding Solutions)

optimatech@gmail.com

Mob.no: 9632243111

Enamel Remover Table Top



- Direct plug-in for 230V AC
- Working wire size 0.3mm to 3mm optimal for wire size 0.5 to 2mm
- Wire removing length 3 to 50mm
- Blades auto swing to center No need to adjust just change speed according to wire size or to get optimal removal of enamel.
- Wire centering through special cap to ensure wire enters at center there by no copper cut.
- Comes with acrylic guard ensures removed particles not scattered and falls in only one side.
- Blades & other accessories available in our stock.
- Comes with Foot switch & Mains control.



Optima Tech Solutions

(Complete Winding Solutions)

optimatech@gmail.com

Mob.no: 9632243111

Enamel Remover For Fine Wire



MOTOR SPEED : 2800 r/mm,

MOTOR POWER : 120W, VOLTAGE:220V/50Hz,

MACHINE SIZE:L 31cm*W 22cm*H22cm*,

MACHIEEN SURFACE:POWDER AND BRIGHT LACQUER

MACHINE WEIGHT : 8.55KG

Adjustment easy through knob provided side by

MACHINE IMPORTED EASY TO HANDLE NO MAJOR CRITICAL PARTS EASY FOR USAGE.

Fiber wheels and belts are available at our stock

Gauge we can strip: 0.04-0.3mm copper wire,

OPTIMAL FOR size is:0.12-0.25mm



Optima Tech Solutions

(Complete Winding Solutions)

optimatech@gmail.com

Mob.no: 9632243111

Enamel Remover Hand Held



- Direct plug-in for 230V AC
- Working wire size 0.3mm to 3mm optimal for wire size 0.5 to 2mm
- Wire removing length 3 to 50mm
- Blades auto swing to center No need to adjust just change speed according to wire size or to get optimal removal of enamel.
- Wire centering through special cap to ensure wire enters at center there by no copper cut.
- Comes with acrylic guard ensures removed particles not scattered and falls in only one side.
- Blades & other accessories generally available in our stock.
- With all above comes at very low price.



Optima Tech Solutions


(Complete Winding Solutions)

optimatech@gmail.com

Mob.no: 9632243111

Probes and Rectepcles:

P 75 and R75



OPTIMA TECH SOLUTIONS

Probe

Receptacle

Technical specifications (recommended)		Materials	
Minimum Center	1.91mm(75mil)	Receptacle	Brass, Gold Plated
Current Rating	3amps, continuous	Contact barrel	Brass, Gold Plated
Contact Resistance	50milliohms	Spring	Stainless Steel wire or Music Wire, Gold Plated
Mounting Holes Size	1.35mm	Plunger	High Carbon Steel(Standard) or Full-hard
Rated Stroke	2.0mm/1.3mm		Beryllium Copper(Available), Rhodium Plated
Spring Force	113g(4.0oz)	Over Nickel or Gold Plated Over Nickel	
Connections	Style CR:Crimp Style SC:Solder Cup Style WW:Wire Wrepped		

Technical specifications (recommended)		Materials	
Minimum Center	1.91mm(75mil)	Receptacle	Brass, Gold Plated
Current Rating	3amps, continuous	Contact barrel	Brass, Gold Plated
Contact Resistance	50milliohms	Spring	Stainless Steel wire or Music Wire, Gold Plated
Mounting Holes Size	1.35mm	Plunger	High Carbon Steel(Standard) or Full-hard
Rated Stroke	2.0mm/1.3mm		Beryllium Copper(Available), Rhodium Plated
Spring Force	113g(4.0oz)	Over Nickel or Gold Plated Over Nickel	
Connections	Style CR:Crimp Style SC:Solder Cup Style WW:Wire Wrepped		

Mob.No:9632243111
Email: optimaa.tech@gmail.com




Optima Tech Solutions

(Complete Winding Solutions)

optimatech@gmail.com

Mob.no: 9632243111

P100 AND R100



OPTIMA TECH SOLUTIONS

P100-B (30° angle)
P100-C
P100-G (90° angle)
P100-J
P100-U
P100-U3 (Ø 0.3, 30° angle)
P100-S (Ø 0.6, 25° angle)
P100-A (Ø 1.5, 90° angle)
P100-A20 (Ø 1.9, 90° angle)
P100-E (Ø 1.5, 90° angle)
P100-D (Ø 1.27)
P100-F (Ø 1.5)
P100-H (Ø 1.5)
P100-K (Ø 1.5)
P100-LM (Ø 1.5, 90° angle)
P100-LM20 (Ø 2.0, 90° angle)
P100-T (Ø 1.5, 30° angle)
P100-T20 (Ø 1.9, 30° angle)
P100-V (Ø 1.5)
P100-V20 (Ø 2.0)
P100-X (Ø 1.5)
P100-X20 (Ø 2.0)
P100-W (Ø 1.27)
P100-Z (Ø 1.27)

P100

Receptacle

R100-CR

R100-VCR
R100-SC
R100-VSC

R100-WW
R100-VW




Optima Tech Solutions

(Complete Winding Solutions)

optimatech@gmail.com

Mob.no: 9632243111

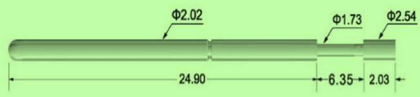
P125 AND R125

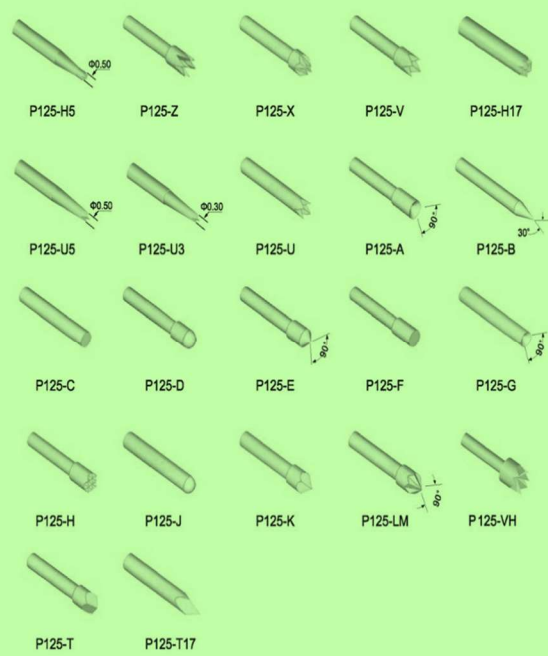


OPTIMA TECH SOLUTIONS

Probe

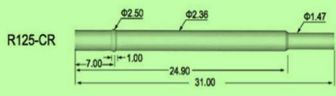
P125-F-9G



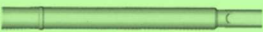


Receptacle

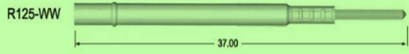
R125-CR



R125-SC



R125-WW



Technical Specifications

Recommended	
Minimum Center	:3.18mm(125mil)
Current Rating	:5amps, continuous
Contact Resistance	:30milliohms
Mounting Holes Size	:Φ2.40
Full Stroke	:6.35mm
Rated Stroke	:4.32mm
Spring Force	:113/198/255gf(4/7/9 oz)

Materials

Receptacle	:Bronze, Gold Plated
Contact Barrel	:Bronze, Gold Plated
Spring	:Music Wire, Gold Plated
Plunger	:BeCu or Steel, Rhodium Plated or Gold Plated

How To Order: Spring Contact Probe

Series	Tip Style	Spring Force (oz)	Plating Options (G=Gold Plated)	Receptacle Series	Termination
P125	F	9	G	R125	WW
Series P125				Termination: WW	
Tip Style: B, J, U, S, U					
Spring Force: 3 oz					

Mob.No: 9632243111
Email: optimaa.tech@gmail.com



Optima Tech Solutions

(Complete Winding Solutions)

optimatech@gmail.com

Mob.no: 9632243111

Big Tensioner (TCL) -- Model and specification

Model	wire Dia.	Tension area
TCL	Ø0.20 --- 0.60	200g --- 2000g
TCLL	Ø0.50 — 1.20	1000g — 5000g

Magnetic force Tensioner (MTC) --Model and specification

Model	wire Dia. of reference (mm)	Tension area (g)
MTCSS	Ø0.03 --- Ø0.07	4 --- 40
MTCS	Ø0.04 --- Ø0.14	10 --- 120
MTCM	Ø0.08 --- Ø0.25	50 --- 400
MTCL	Ø0.12 --- Ø0.35	80 --- 600
MTCLL	Ø0.14 --- Ø0.40	100 --- 800

Note: Test condition is less 5M linear velocity.





Optima Tech Solutions

(Complete Winding Solutions)

optimatech@gmail.com

Mob.no: 9632243111



Item	Part No
Felt Round	20X5X5
	28X10X6
	20X10X5
	33.5X4.5X6
Felt Square	36X30X5
Sandwich Felt	360X1700X12
Felt round	25X5X5



Optima Tech Solutions

(Complete Winding Solutions)

optimatech@gmail.com

Mob.no: 9632243111

TENSION METER

TR SERIES

The Trigger Tension Meter measures tensions on wires, yarns, fiber optic cables, films, tapes, narrow fabrics and flat materials. The contact elements are recessed into the trigger shield, which keeps material from snagging and/or breaking behind the rollers. Internal magnetic dampening assures an accurate tension reading no matter which position the meter is held in.

Note: Each instrument is calibrated to one specific material for a direct tension reading (typically the customer's choice). When measuring other materials, the meter will provide a repeatable reference but not a direct tension reading.

FEATURES

- Portable
- Versatile
- Lightweight
- Easy Operation
- Durable Construction
- Magnetic Dampening
- Can Be Permanently Mounted
- Right- or Left-Hand Operation
- All new instruments are warranted against defects in materials or workmanship for the period of (1) year

Our instruments are utilized extensively in the major wire, textile, coil winding, EDM, fiber optic and synthetic materials industries. We have established a reputation for providing quality instruments which endure rigorous industrial and test applications.

EDM WIRE APPLICATIONS

Tensitron has a long time association with the wire EDM industry, dating back to the original American prototypes for this technology. Special EDM calibrations of our tension meters are performed to insure utmost accuracy for the instrument to the wire type. Typically these calibrated values mimic the calibration protocol for the Wire EDM machine and therefore help to ensure maximum accuracy of wire tension



Optima Tech Solutions

(Complete Winding Solutions)

optimatech@gmail.com

Mob.no: 9632243111

throughout its entire tension range. We are quite familiar with the requirements of measuring tensions on different types of EDM wires and are happy to make a recommendation for your specific application.

As a general rule of thumb, most mechanical tension meters must be calibrated to the specific EDM wire being used, to ensure accuracy. The Digital Tension Meter, P/N: TX-5EDM, already includes multiple calibrations for many different EDM wire sizes. If using the less expensive mechanical tension meter, we recommend our model P/N: TR-4000 specially calibrated to your wire size. For greater accuracy, flexibility, data logging capability and ease of use we recommend our digital model TX-5000-EDM-1 for EDM wire applications.

MODEL "TR" SERIES - STANDARD MODELS:

Model Number	Range in Grams	Accuracy*	Price
TR-25	3 - 25 g	7%	
TR-125	3 - 125 g	7%	
TR-250	3 - 250 g	7%	
TR-1000	5 - 1000 g	7%	
TR-2000	25 - 2000 g	7%	
TR-4000	50 - 4000 g	7%	
TR-5000	100 - 5000 g	7%	

* Unless a "Special Calibration" is requested and a sample material is provided, the full scale accuracy in the first revolution of the dial is +/-7%. Tension readings beyond the first revolution of the dial are for reference only.



Optima Tech Solutions

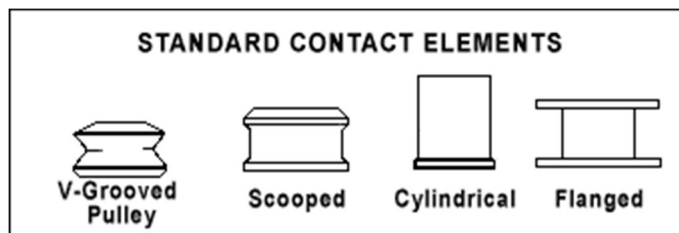
optimatech@gmail.com

Mob.no: 9632243111

SELECT A CONTACT ELEMENT / ROLLER FOR YOUR APPLICATION



Tensitron TR meters can be equipped with different contact elements to easily measure tension in a wide variety of applications. TR units come standard with V-grooved pulleys for measuring wire and filaments. For special applications, such as thin tapes and webs, braided material, or tow, equip your meter with scooped, cylindrical, or flanged contact elements by ordering an “R” Custom Roller Option:



CUSTOM ROLLER OPTIONS:

Option	Description	Price
-R (Cylindrical)	Custom Roller Option: Cylindrical. Available in ½” or 1” width. Recommended for flat material. Allows for testing the edge of a wide strip.	



Optima Tech Solutions

(Complete Winding Solutions)

optimatech@gmail.com

Mob.no: 9632243111

Option	Description	Price
-R (Scooped)	Custom Roller Option: <u>Scooped</u>. Recommended for braided or “loose” material. Avoids snags and keeps material spread evenly.	
-R (Flanged)	Custom Roller Option: <u>Flanged</u>. Recommended for flat material. Edges prevent sliding.	

METER DIALS

All Trigger Tension Meters have a dial face that use the black numbers in the first revolution of the pointer and red numbers in the second revolution. Tension readings (in red print) beyond the first revolution of the dial are for reference only.





Optima Tech Solutions

(Complete Winding Solutions)

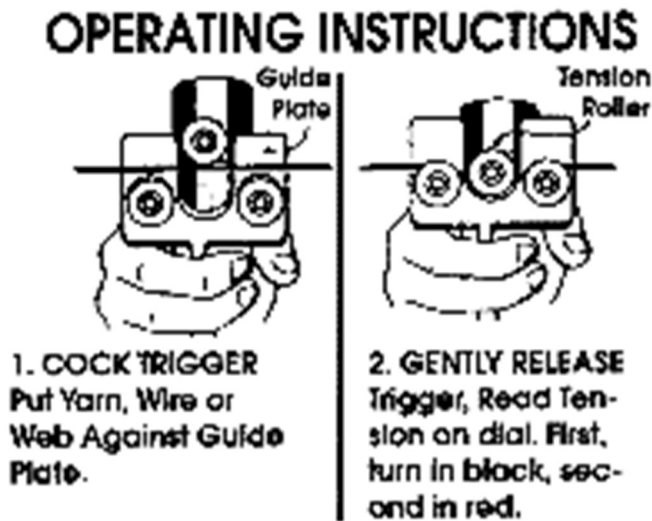
optimatech@gmail.com

Mob.no: 9632243111

Model Number	Dial - First Revolution (Black numbers)
TR-25	0 to 25 g
TR-125	0 to 50 g
TR-250	0 to 100 g
TR-1000	0 to 250 g
TR-2000	0 to 450 g
TR-4000	0 to 500 g
TR-5000	0 to 650 g



OPERATION



Squeeze the trigger to separate the three rollers. Insert material (yarn, wire, web, etc.) between the contact elements so it rests against the trigger shield and slowly release the trigger. The center roller deflects as the tension in your material increases. As the pointer makes its first revolution read the **BLACK** outer dial for the correct tension. Should tensions increase and the pointer begin a second revolution, read the **RED** inner dial. To release the material, slowly squeeze the trigger and remove the tension meter.

DAMP ENVIRONMENTS

For damp materials or operation in a damp atmosphere, the Model "RT" Series has internal parts made of stainless steel, plastic, gold-plated steel, copper and other materials and treatments which minimize the damage due to moisture. Although this instrument is not waterproof, it should give excellent service under conditions where it is exposed to an occasional spray. See Contact Us and ask the salesperson for pricing and availability. **All trigger meter tension ranges are available in the "RT" Series.**



Optima Tech Solutions

(Complete Winding Solutions)

optimatech@gmail.com

Mob.no: 9632243111

TX-1 SERIES

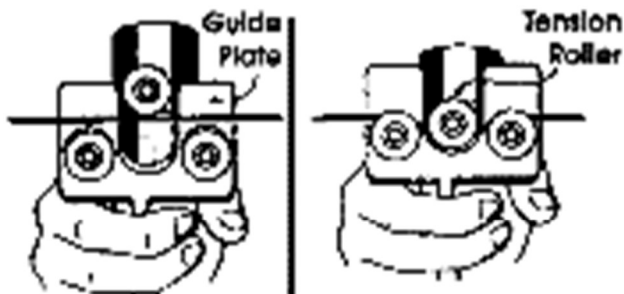
The TX-1 models of Digital Instruments are used to measure tension(s) on fine wires and filaments, where tensions do not exceed 5,000 grams. Utilized extensively in major wire, textile, coil winding, EDM, fiber optic, and synthetic materials manufacturing and testing environments. TX-1 instruments are pre-programmed with an extensive selection of wire and filament sizes. Custom calibrations, depending on material, are available for wire diameters up to 20 AWG (.0320").

The TX-1 series of Tension Meters was designed to check tensions of all wire or yarn preparatory operations, fiber optics, film, tape, narrow fabrics and flat materials. The contact elements are recessed into the trigger shield which effectively stops material from catching and breaking behind the rollers. These instruments are accurate in any position the meter is used in.

- Accurate
- Dependable
- Reliable

OPERATION:

OPERATING INSTRUCTIONS



1. COCK TRIGGER
Put Yarn, Wire or
Web Against Guide
Plate.

2. GENTLY RELEASE
Trigger, Read Ten-
sion on dial. First,
turn in black, sec-
ond in red.



Optima Tech Solutions

(Complete Winding Solutions)

optimatech@gmail.com

Mob.no: 9632243111

First select your material and its size. Then squeeze the trigger to separate the rollers. Insert the material against the trigger shield between the contact elements and slowly release the trigger. Your material drops automatically in place and readings will appear on the display.



COLOR DISPLAY / OPERATOR INTERFACE:

- Battery Charge level
- Selectable Tension in Grams, Newtons or Lbs
- Active, color changing Bar Graph
- Select Material and Size. Instrument automatically adjusts the calibration
- Minimum and Maximum values

FEATURES:

- Large, easy to read backlit, color display with adjustable backlighting.
- Display shows tension, name of material selected, minimum and maximum tension values, dynamic color bar graph indicating changing tensions and battery charge level



Optima Tech Solutions

(Complete Winding Solutions)

optimatech@gmail.com

Mob.no: 9632243111

- Select tension values to display in Grams, lbs, Newtons or cN (cN only available on TX-125-1-series instruments)
- Instruments come with calibrations for numerous wires and filaments
- Up to 10 additional custom calibrations may be programmed into the instrument
- Extremely accurate custom calibration procedure employing up to a 10-point multilinearization procedure.
- All calibrations are password protected
- Choose your calibration by first highlighting and selecting the material (Wire, Filaments or Custom). Next define material size using choices such as AWG, Inches or mm and push "Enter". The instrument automatically adjusts to the calibration you've selected with a full-scale accuracy of +/- 1%. Note: Full-scale accuracy for custom calibrations is material specific.
- Adjustable LCD refresh rates allowing for stable, digital readouts
- Automatic shutoff after several minutes of non-use
- Instruments may be operated continuously while connected to power supply
- Data Logging Feature. Select either Continuous or Single Point data logging mode and record tension or speed (optional) values to the instrument memory.
- Data Statistics: Monitor your process by viewing count, maximum, minimum, average, and standard deviation values of your logged data.
- Set-Point feature allowing user to define high and low point specifications which are then shown on the main display as an active, color changing bar graph.
- Rechargeable NiMH batteries with power supply provided. Approximately 12 hours of continuous use depending upon backlighting intensity.
- Power supply operates with input voltages from 100 – 240V and includes several, interchangeable adapters allowing use with European, Australian, US, English and other plug configurations.
- Optional features including: Custom Rollers, Speed and Length monitoring, Analog Output and Serial Output
- Optional magnetic or rigid Mounting Bracket
- All models typically available from stock
- Numerous application specific models available
- Durable, lightweight carrying case with protective foam inserts
- All instruments factory-calibrated and ready for use. Calibration certificate included and all calibration values traceable to National Standards.
- All new instruments are warrantied against defects in materials or workmanship for the period of (1) year



Optima Tech Solutions

(Complete Winding Solutions)

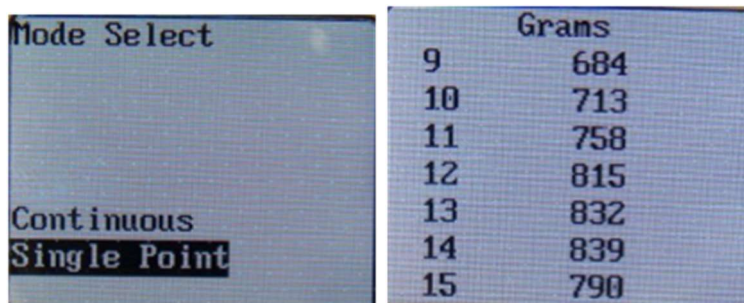
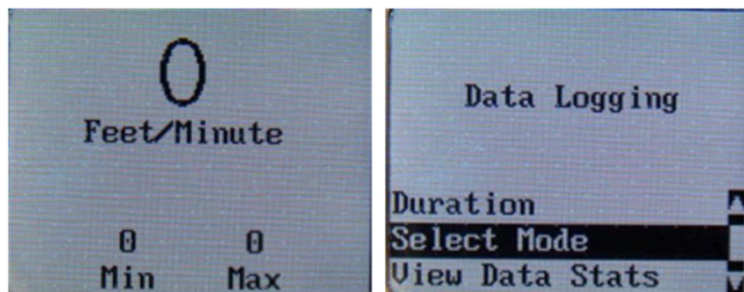
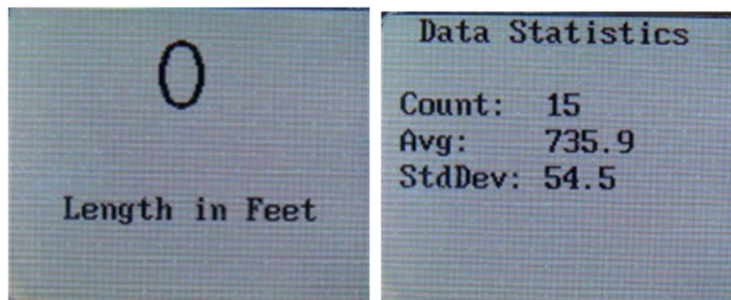
optimatech@gmail.com

Mob.no: 9632243111

DATA LOGGING, AVERAGING AND STATISTICS

- Data Averaging: This feature is valuable when your process has short duration high and low "spikes" in tension and a dampened average of those spikes is more representative of the process. This feature allows the user to select the duration the instrument takes tension readings over and posts that average to the display. Duration options are: 1, 2, 5 and 10 seconds. This is a rolling average, meaning that all of the readings taken in the previous 1, 2, 5 or 10 seconds (your choice) will be averaged and displayed. See the video for a before and after demonstration of the Data Averaging feature at work: <https://www.youtube.com/watch?v=2ebmC-qyONc>
- Data Statistics: Monitor and assist in Process Control by capturing hundreds of data points and either download the data or use the onscreen display to show Count, Average, Standard Deviation, Maximum and Minimum values.

DATA STATISTICS AND SET POINT FEATURE:





Optima Tech Solutions

(Complete Winding Solutions)

optimatech@gmail.com

Mob.no: 9632243111

STANDARD TX-1 INSTRUMENTS:

#	Model	Description	Accuracy Full Scale	Range in Grams
1	TX-125-1	V-Groove Rollers with tension values selectable in cN, grams or lbs	1%	0-125
1	TX-1000-1	V-Groove Rollers with tension values selectable in Newtons, grams or lbs	1%	10-1000
1	TX-5000-1	V-Groove Rollers with tension values selectable in Newtons, grams or lbs	1%	50-5000
1	TX-5EDM-1	For use with EDM wire Machines	1%	50-5000



Optima Tech Solutions

(Complete Winding Solutions)

optimatech@gmail.com

Mob.no: 9632243111

Company Profile

We are specialized in winding Machine accessories giving complete solution in winding technology. We help customer who are in this field providing them technical solution to meet there demand or quality issues we provide consultation for all process related right from design start up to stream line production or till(PPAP). Automation to meet there production demand and quality assurance.

All necessary winding accessories and small automation in winding such as:

- Wire Twisters
- Enamel remover
- Winding Machine and fixtures
- Nozzles
- Ceramic wire guides
- Ceramic Wire rollers
- Ceramic Wire retainers.
- Tensioner and tension measuring unit

OPTIMA TECH SOLUTIONS

(COMPLETE WINDING SOLUTIONS)

#5, Anjanadri Plaza, Neharu Road
Girinagar Circle, Girinagar,
Banashankari 3rd Stage
BANGALORE-560085

KARNATAKA INDIA

PH: [9632243111](tel:9632243111)/7349661919

EMAIL: optimaa.tech@gmail.com / sales.optimatech@gmail.com

WEBSITE: www.optimatechsolutions.com